



Great Meadows Conservation Trust, Inc.
 P. O. Box 171
 Glastonbury, CT 06033
 www.gmct.org



Great Meadows Conservation Trust, Inc.
 Glastonbury, Rocky Hill, Wethersfield, Connecticut

Vol. XXXIX no. 1

March 2018

President's Annual Report—2017

By Jim Woodworth for Chris Duff, President

With great pride I can report a banner year for the GMCT, under the leadership of the youngest president in our 50 year history. At age 37 Chris's words of acceptance at last year's Annual Dinner were hopeful and articulate. On Saturday, February 24, Chris and his wife Jennifer welcomed their son Rowan Alexander Duff into their family, and the Trust welcomes the newest, youngest member of the Trust family, as well.

In the tradition of civic involvement of many Trust Presidents, officers, and board members, past and present, Chris served on the Rocky Hill Inland Wetlands Commission, and last fall he won a seat on the Rocky Hill Town Council,

This year, as we glance backward over 50 years of action preserving the Great Meadows and its environs, we also look forward to the next 50

years. Note the actions taken by the Trust (Pages 4,5). Note also how many issues required sustained effort over many years before their resolution. During 2017 Audubon Connecticut designated the meadows as a landscape scale Important Bird Area. Our efforts to stop the reopening of the former Rocky Hill

Landfill are ongoing.

Trust members, in cooperation with Food and Water Watch, Inc., were involved in the passing of ordinances in our towns to ban fracking waste disposal.

The Trust's stewardship of 189 acres in 49 parcels owned or under easement, included 18 parcel



inspections, numerous farm leases, invasive species and trash removal, native species plantings, and trail maintenance projects.

On the Wood Parcel we replaced a 50 year old culvert. We formalized a hunting agreement with the Wethersfield Game Club and joined with Rocky Hill farmers in their efforts to close the meadows to vehicular traffic. We joined with Goodwin College to host a walking trail through our properties in



**When is a tranquil snow covered meadow especially sweet?
 When you know the snort and whine of motocross engines have
 given way to the hum of tractors and the trill of birdsong.
 CT River Motocross Park 1995 – 2017**

Hockanum Meadow.

In terms of outreach the Trust hosted 278 Winter Walkers, and walkers and paddlers on CT Trails Day. Through these efforts we have welcomed many new members who bring energy and vision to build on our 50 years of achievement.

Renew your membership now! Include your membership dues in your Annual Dinner payment or use this form.
 \$15 – Individual \$300 – Life Member Name _____
 \$ 25 – Family \$500 – Family Life Membership Address _____
 Send Check payable to Great Meadows Conservation Trust, inc. to P.O.Box, Glastonbury, CT 06033

Upcoming Events:

Annual Dinner: March 22 – p. 7

50 Years of protecting the Meadows – P. 4 - 5

CT Trails Day Events June 2 & 3 – P. 6

Annual Reports and News:

Nominating Committee Report – P. 2

Land Management Committee Report – P. 3

Treasurer's Report – P. 3

Nancy LaRoche Memorial Donations – P. 6



Agenda — Annual Meeting, March 22, 2018

1. Minutes of Annual Meeting March 31, 2017.
2. Treasurer’s report for fiscal year 2017(see p. 3)
3. President’s 2017 annual report to the members (see p. 1)
4. Report of the Nominating Committee
5. Election of Directors to serve through 2021
Motion: That Diana Evans, Jerry Hayes, Li-

lilly McKenzie, and Whit Osgood be elected to serve as Directors for their respective terms.

6. Election of Officers to serve until next annual meeting. Motion: That Christopher Duff, Diana Evans, Daniel Schnaidt and Richard Doran be elected to serve as President, Vice President, Secretary and Treasurer, respectively of the GMCT for the 2018 – 2019 term.

NOMINATING COMMITTEE REPORT – 2018

COMMITTEE MEMBERS: Rick Doran, Chris Duff (ex officio), Sandi Kelly, Ralph Moyer, Penny Rusnak, Daniel Schnaidt.

Vice President –
Diana Evans (Wethersfield – 1st – 2018)

Secretary –
Daniel Schnaidt (Glastonbury – 2nd 2019)

Treasurer –
Richard Doran

.....
*** to be elected at the 2018 Annual Meeting.**

Retiring Directors: James Zagroba (Rock Hill), Pamela St. Jean (Wethersfield).

New Directors

- (Town and Term of Office)*
 Diana Evans (Wethersfield – 2nd – 2021)
 Gerry Hayes (Wethersfield – 1st – 2021)
 Lilly McKenzie (Rocky Hill - 1st- 2021)
 Whit Osgood (Glastonbury – 2nd – 2021)

Directors Continuing Terms

- Christopher Duff (Rocky Hill – 2nd – 2020)
 John Ferguson (Glastonbury – 1st – 2020)
 Timothy Lewis (Rocky Hill - 1st– 2019)
 Linda Nielson (Wethersfield – 1st – 2020)
 Elizabeth Schmitt (Glastonbury – 1st – 2020)
 Daniel Schnaidt (Glastonbury – 2nd 2019)
 Peter Spangenberg (Wethersfield – 1st– 2019)

Officers*

President –
Christopher Duff (Rocky Hill – 2nd – 2020)

Donations in Memory of Nancy Laroche to bolster outreach efforts

Last November the Trust received an online membership from Nancy LaRoche who said, “I wish you were getting a worker and a walker, but, unfortunately, such is not the case. You are getting an 80-year-old, visually impaired woman who uses a rolling walker and is on oxygen 24/7. But one who still walks vicariously and enviously and even somewhat joyously when she sees the photos online.’ She went on to express her wish that her memorial donations go to “things I cherish and value.” Nancy died on Dec 5. Donations to the Trust in her memory were made by Richard and Claire Dorr, Lou and Betsy Lanza, Carol and Frank Murphy, W. James and Mary Regina Therrien, Jane Tedder, Linda and Robert Zemmer, Rosemary and Del Serfilippi, Laurette Laramie, Mrs. Paula Dorn, Paul Hallisey, Stephen Hallisey, Barbara Aordkian, Stephanie Summers, Sherry and Myles Hubbard, and Mary Hemingway. Their donations will help make the Wood Parcel Trail handicapped possible.



Annual Meeting—Special Guest Speakers

50th Anniversary Celebration

Join Us for our Annual Dinner with **Special Guest Speakers!**



“Special Guest Speakers” will include founding member Joe Hickey, past presidents Neal Cox, Rick Doran, Jim Woodworth, and photographer, editor, and officer Duffy Schade sharing stories of GMCT lore.

The Gallery

141 New London Turnpike
Glastonbury

Thursday, March 22, 2018

Social Hour 5:30 • Dinner 6:30
Annual Meeting and speakers to follow

Buffet Dinner Menu

- Cheese and cracker tray, cocktail meatballs
- Tossed Salad and assorted cold salads
- Carving station with New York sirloin of beef

- Pasta with Pesto and Marinara sauces
- Baked cod, breaded with lemon and butter
- Chicken Francaise
- Vegetables du jour, red roasted potatoes
- Dessert du jour

Regular and decaf coffee and tea

Cash bar for all other beverages and soda

The cost per person for dinner is \$30.00, tax and gratuity included

—clip here—

GMCT Annual Dinner Reservations

Please reserve no later than March 15th
for the dinner Thursday, March 22, 2018

Questions may be directed to Rick Doran at 860-690-9983 or info@GMCT.org

The cost per person for dinner is \$30.00.

Name(s): _____

Phone Number _____ Address _____

Dinners @ \$30.00	_____	=	_____
Memberships @ \$15 individual/\$25 family	_____	=	_____
Additional Donation	_____		_____
Total Enclosed:	_____		_____

Please enclose a check payable to “GMCT” and mail to: GMCT Annual Meeting

www.GMCT.org



Rick Doran
223 Main Street,
Wethersfield, CT 06109



50th Anniversary Events – Winter Walk numbers up over the moon!

Thanks to the new Super Moon and Super Blue Moon walks, and great publicity from the *Hartford Courant*, *Wethersfield Life*, and the Hartford Area Hiking Meetup Group, 455 walkers enjoyed fresh air and



healthy exercise in the Great Meadows this winter, hosted by the GMCT. The walks began with 105 moon worshippers gathered on the point at the Cove as the supermoon rose and shimmered on the river (see cover photo), followed by sparkling winter weather for the snowy Wood Parcel walk (right). A Glastonbury walk was rained out. After the January thaw, the high water, and the refreeze, ice was a factor, mitigated by sunshine in the Glastonbury meadows. At

the Wolf Parcel (below, left), ice in the lower elevations altered the route, but didn't deter trash pickup. DiPaola was slippery, but navigable. At Crow Point, ice softened in the warm morning air, and finally, only a few frozen puddles were left in the mud on the new Goodwin College trail under construction in Hockanum Meadow. At right hikers check out the osprey nest on the oil company dock.



June 2 & 3, 2018

Connecticut Trails Day – Walk, Paddle, Bike Ride

The Little Kids' Walk in the Wood Parcel, the novice paddle around the the Cove, the intermediate paddle up the River, and, back by popular demand, the bike ride from the Cove through the meadows. A bike ride and a hike from the Ferry Landing, too.

- 1. Educational Nature Walk for Little Kids! Saturday, June 2, 10:30 AM to 12:00 PM. Wood Parcel.** Bring your young naturalists (ages 4-6) for a short 1-mile hike and nature activity on this Great Meadows Conservation Trust property. We will cross the shiny bridge over the brook, follow the trail through the woods, pass the turtle pond, and follow the trail along the marsh. The route will skirt the edge of the cornfield, site of the original "Pyquag" Native American summer camp, to the irrigation pond and back. We'll have a table set up with stickers and nature activities. Meet leader Jim Woodworth at the entrance to the Wood Parcel. info@GMCT.org
- 2. Bike Ride Rocky Hill Meadows and Old Main Street. Saturday, June 2. 10:00AM. to 11AM.** Meet Paul D'Atillio at Ferry Park. Ride through the meadows to Goff Brook Lane. Return to Ferry Park via Old Main Street. This is about a 5-6 mile round trip that will take about an hour. For more information contact Rocky Hill Parks and Recreation, (860) 258-2772.
- 3. Kayak and Canoe Paddle. Sunday, June 3, 9:00AM to 11AM. Experienced Paddlers.** Limit 20 boats. Join the Connecticut River Watershed Council Lower River Steward Alicea Charamut and GMCT's Tim Lewis. Launch in scenic Wethersfield Cove, paddle upriver to Hartford and back. Explore the beauty of the river—view eagles, ospreys, learn about clean water efforts. A limited number of canoes are available. For more information and pre-registration (required!) call or email Jim Woodworth 860-808-9968, info@gmct.org. Life vests are required. Heavy rain or high water cancels.
- 4. Kayak and Canoe Paddle. Sunday June 3, 10AM. Novice Paddlers.** Limit 20 boats. Join Boy Scout leader Denis Walter and GMCT's Paul Woodworth in a paddle around the Cove. Explore the north side of the Cove and Folly Brook. View birdlife and learn about clean water efforts. A limited number of canoes is available. For more information and pre-registration(required!) call or email Jim Woodworth 860-808-9968, info@gmct.org. Life vests are required. Heavy rain or high water cancels.
- 5. Bike Ride Wethersfield, Rocky Hill and Glastonbury Sunday, June 3. 9:00 AM to 12:00 PM.** Meet leader Jim Woodworth at Cove Park. We'll follow Wethersfield's Heritage Way bike route from the Wethersfield Cove through village streets visiting historic Comstock, Ferre and Anderson Farms, along gravel agricultural roads past, fertile fields, flood plain forest, and marsh habitat along the Connecticut River toward the Rocky Hill Ferry Landing. Ride across the nation's oldest ferry (\$4 round trip, if it is running!) to the Killam-Bassett Farm in South Glastonbury and return. Total mileage: 15. For more information email info@gmct.org.
- 6. Guided Walk. Sunday, June 3rd from Ferry Park. Time, TBA.** Meet Ed Chiucarello at Ferry Park. Hike up Historic River-view Road into Quarry Park and back to the Ferry. Continue along the river bank to the new Surwilo Green Space. RH P&R (860) 258-2772

Land Management Committee Report 2017

By Larry Lunden, Land Management Chair

This year the committee has completed inspections on 18 parcels. We almost got all the scheduled inspections done. I thank Rick Doran, Sandi Kelly, and Deb Creeden for their help in writing the reports.

All three of our conservation easements have been inspected. I thank Betty Schmitt, Rick Doran, and Penny Rusnak for their thorough work.

Our leasing program with local farmers continues to keep 56 acres of farmland in active use. Our leasing program is being run by Rick Doran and Deb Creeden. I thank them for their efforts.

We didn't acquire any new properties this year. We continue to have 189 acres under ownership or easement, in 49 parcels.

After much study of the meadows by Audubon Connecticut, the Great Meadows was designated an Important Bird Area. This is an international recognition of the importance of the area to migrating and nesting birds. We made a presentation to the Rocky Hill Town Council and plan to post signs that tell of the success. Other towns will also be notified of the designation. Audubon Connecticut has a grant program for habitat improvements on IBAs which we will be looking into.

We finalized a hunting license agreement with the Wethersfield Game Club. They have hunted in the meadows for many years under a verbal agreement. Now we have a written agreement between our organizations. The game club keeps an eye on the

meadows for any suspicious activity, and also does an annual cleanup of trash scattered around the meadows.

Goodwin College is in the process of building a walking trail through Hockanum Meadows, and across two of our parcels. After much discussion, we concluded an agreement with Goodwin for the trail to cross our parcels. It is open to the public and will allow access to these isolated parcels. It runs from East Hartford to the Putnam Bridge.

Jim Woodworth has completed a project to replace the broken culverts on our Wood Parcel. With the donation of materials by the MDC and equipment and work by Wethersfield Construction, new pipes are now installed, and the water is running freely.

The farmers have found much crop damage due to vandalism from vehicles driving across the fields. There has been a long discussion with the Rocky Hill Town Council and Public Safety Committee. The result is that the gates are now locked and vehicular traffic is limited to those who own land there. This has eliminated the vandalism problem, and bird activity has been on the increase. Walkers and bikers are welcome to travel the roads. We will make arrangements for those who need vehicular access.

We held six winter walks for the public, co-sponsored with the Connecticut Audubon Society at Glastonbury and the Eleanor Buck Wolf Nature Center. We had an attendance of 278 people total. Meetup.com continues to be a good form of publicity.

Treasurer's Annual Report – 2017

By Rick Doran, Treasurer

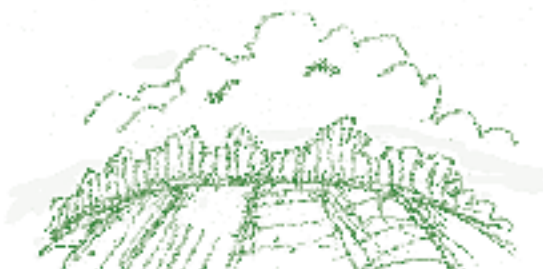
The operations account remains in a positive position secured in a checking account at TD Bank. Our investment account with Vanguard grew 12% in value over year-end 2016. In the third quarter, the Trust transferred \$8,000 from the operations account into the investment account in an effort to gain a greater return on our net assets. With this additional \$8,000 deposit, the Vanguard investment account is up 14.9% over year-end 2016.

Contact was made with our investment advisor at Vanguard and subjects discussed included the Trust balance of funds, spread of risk and goals of growth and income. The investment advisor concluded our present position was still in line with our investment strategy. Also, inquiry was made about funds which

are environmentally sensitive and the Finance & Development Committee will review some "green" environmental and social investments, and then report back to the Board with options for future review.

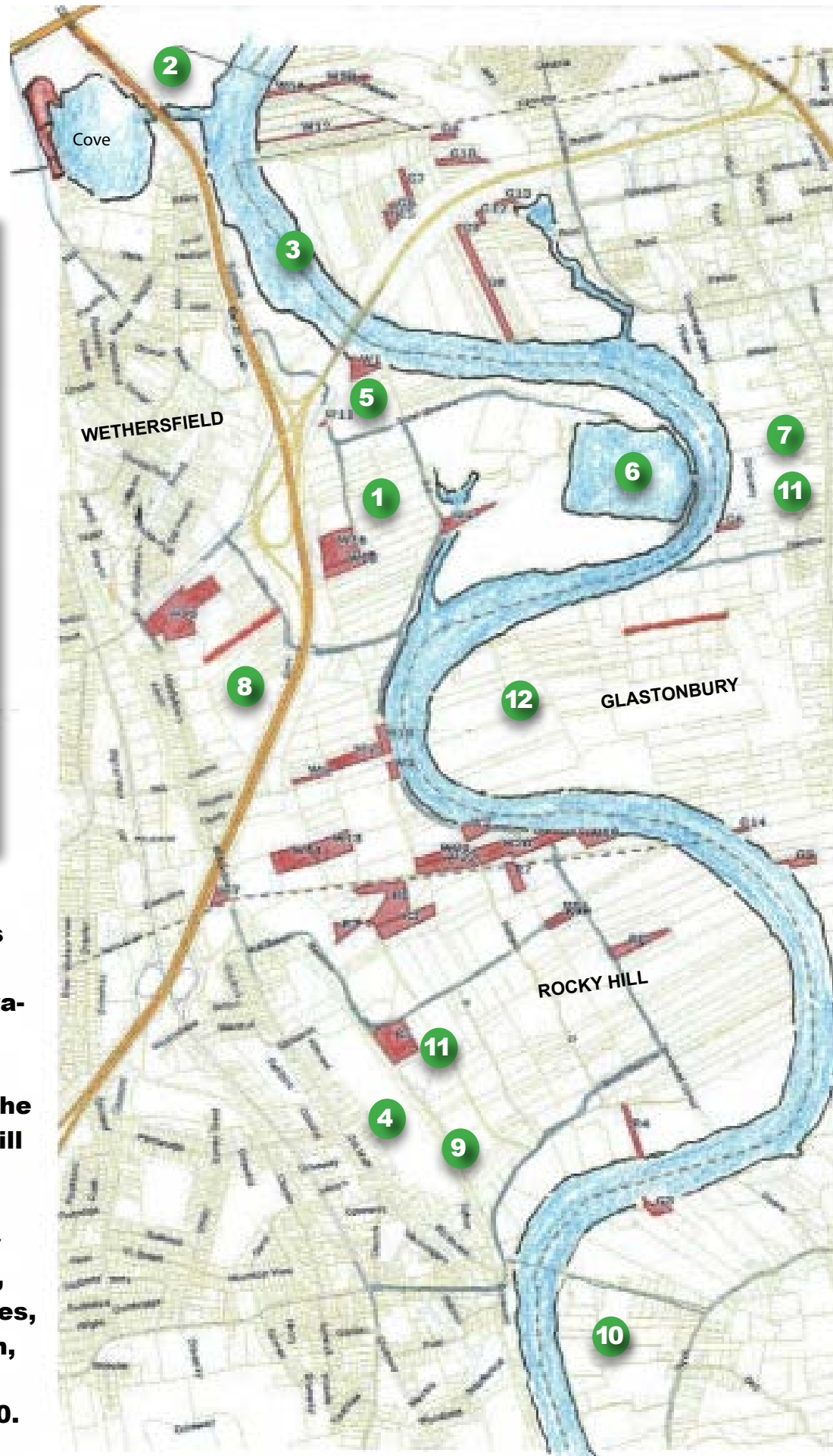
An audit of the Treasurer's ledger and written explanation about deposits, credits and debits was performed in February. The audit team found all accounts are in good standing and fully substantiated.

The budget for 2018 was proposed by the Finance and Development Committee and then presented to the Board. The budget was proposed in a balanced position of \$16,200 of anticipated income and expenses for fiscal year 2018. This is up 17% over the 2017 budget of \$13,900 estimated income and expense, largely due to anticipated expenses for our 50th anniversary activities.



1968/2018
.....
**GREAT
MEADOWS
CONSERVATION
TRUST**
.....
**50
YEARS**

The mission of the Great Meadows Conservation Trust, Inc., is to promote—for the benefit of the general public—the preservation of the Great Meadows and environs along the Connecticut River located generally within the towns of Wethersfield, Rocky Hill and Glastonbury; including the preservation of the rural landscape, the floodplain and water resources, marshland, swamps, woodland, farmland, open spaces, the plant and animal life therein, and unique historic and scenic sites. Adopted January 28, 2010.



STEPS ALONG THE WAY

50 Years of Protecting the Meadows

Since 1968 GMCT has directly protected many key parcels in the Meadows by purchase, gift or easement. Working alone or with other organizations, we have taken these actions:

- 1 1968-1973:** To lead a successful campaign to defeat a proposed horse racing facility in the Wethersfield Meadows, culminating with the purchase of the Standish Parcel in 1973.
- 2 1988-1989:** To halt clear-cutting of rare floodplain forest in the Folly Brook Nature Area on the north side of Wethersfield Cove. To monitor “*Stump City*” and help to negotiate an easement granted by the City of Hartford to The Nature Conservancy.
- 3 1988:** To include five miles of our scenic river in the National Rivers Inventory, working with Representative Barbara Kennelly.
- 4 1988-1990:** To cooperate in the purchase of Quarry Park in Rocky Hill, after helping to stop an intrusive development proposal.
- 5 1990-1995; 2003:** To deter a major boat launch proposal at Putnam Bridge, Wethersfield.
- 6 1995-97:** To defeat a major bridge fabrication proposal at Crow Point, Wethersfield that had been approved by Wethersfield Inland Wetlands Commission and Connecticut River Assembly, but finally rejected by the Army Corps of Engineers.
- 7 1996-2005:** To oppose a housing proposal in the Glastonbury floodplain and to advocate retaining a wildlife area as part of Glastonbury’s Riverfront Park.
- 8 1999; 2015:** To oppose a proposed change of zoning land use from Agriculture to Other Business uses on Elm Street by the Wethersfield Planning & Zoning Commission. To oppose a zoning appeal to site a construction equipment storage facility on Elm Street in the Agricultural Conservation Zone.
- 9 2004-Present:** To help stop the reopening of the former Rocky Hill dump through intervener status and representation in the Public Participation Plan. To appeal a decision by the Rocky Hill Planning & Zoning Commission that GMCT asserted was in violation of the Rocky Hill regulations. In 2015 Connecticut Superior Court decided in favor of the Trust.
- 10 2006:** To support the town’s purchase of 17 acres of development rights as a town conservation easement in the South Glastonbury Meadows.
- 11 2010:** To participate in The Nature Conservancy’s American Elm species restoration project in the Connecticut River floodplain forest by plantings in Rocky Hill and Glastonbury.
- 12 2006-2016:** To promote the designation of the Great Meadows as a “landscape scale” Important Bird Area (IBA) by Audubon Connecticut.

Areas shown in red represent Trust owned properties and easements.